

# MEM<sup>®</sup>

SOUND IS BEAUTIFUL

## MVT-555 STEREO INTEGRATED AMPLIFIER

We use our exclusive KT90MC tubes to provide excellence in sound reproduction. The highest quality hand wound transformers by MIEG; utilizing Oxygen-Free Copper wire (OFC) around premium silicon steel laminations to provide exceptional audio frequency response for the highest fidelity. Hand assembled; with point to point soldered highgrade electrolytic and coupling capacitors, resistors, potentiometers and a high-end rectifier. In addition to premium RCA inputs and output binding posts connected with silver Teflon jacketed wires. This amplifier is capable of installing KT90\*, KT88\*, KT120\*, 6550\* and EL34\*.

\*All four power tube units must be of the same model type.

## MVT555 Specifications:

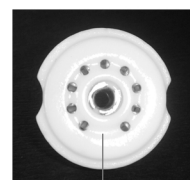
Power Output: 55W x2  
Output Impedance: 4Ω, 8Ω  
Input Impedance: 100K  
Input Voltage: 300mv  
Total Harmonic Distortion: ≤0.05%  
Frequency Response : 11Hz ~ 60KHz ± 1dB  
Signal to Noise Ratio: 90dB  
Outputs: 2 Pairs  
Inputs: 4 Pairs  
Power Dissipation: 140W(min), 250W (max)  
Vacuum Tubes: KT90MC x4, 12AX7 x2, 12AU7 x2



### Notes:

- KEEP YOUR VACUUM TUBES CLEAN AND FREE OF OIL. HANDLE THEM WITH THE COTTON GLOVES PROVIDED.
- Prior to installing the tubes; please carefully check that the corresponding numbers match the indicated tube and tube socket. You will notice that every tube has a numerically designated socket. The tubes are all tested and matched for optimum audio performance and clarity.
- Inspect the tube pins at the bottom of the tube and center and align it with the tube socket (the tube pins can only be placed in one direction due to the locating spigot index). Please use a gentle but firm vertical pressure to insert the tube.
1. The 9 pins of 12AX7 or 12AU7 tubes should be inserted firmly into the socket. Please ensure that the correct tube is used. Do not twist the tubes, or it will damage the tube and tube socket. (Picture 1)
  2. The keyed post at the bottom of the 8 pin Power tube should be inserted firmly into the tube socket (Picture 2)
  3. The RCA interconnect must be connected with a corresponding input and that the selector dial is aligned with the input you have selected.
  4. Speaker cables must be connected to either the 4 or 8 ohm binding post; for the positive side (red) and the negative side (black), then connect the speaker cable to the corresponding speaker binding post.
  5. Bias values for the specific power tubes are shown on the top panel. Adjustment is achieved by selecting the corresponding socket (V1-V4) with the selector switch and using the trim potentiometer located next to the socket.
  6. Place the safety cover carefully over the tubes by aligning the the four pins to avoid injury and damage.

Picture 1



12AU7/12AX7 Tube Socket

Picture 2



Indexing Slot  
Power Tube Socket



**MIEG CORPORATION**

2300 Clements Ferry Road, Suite 202 Charleston, SC USA / TEL: +1-843-819-8883 / FAX +1-843-388-4151  
www.miegc.com / Enquiries: sales@miegc.com or call +1-843-819-8883

